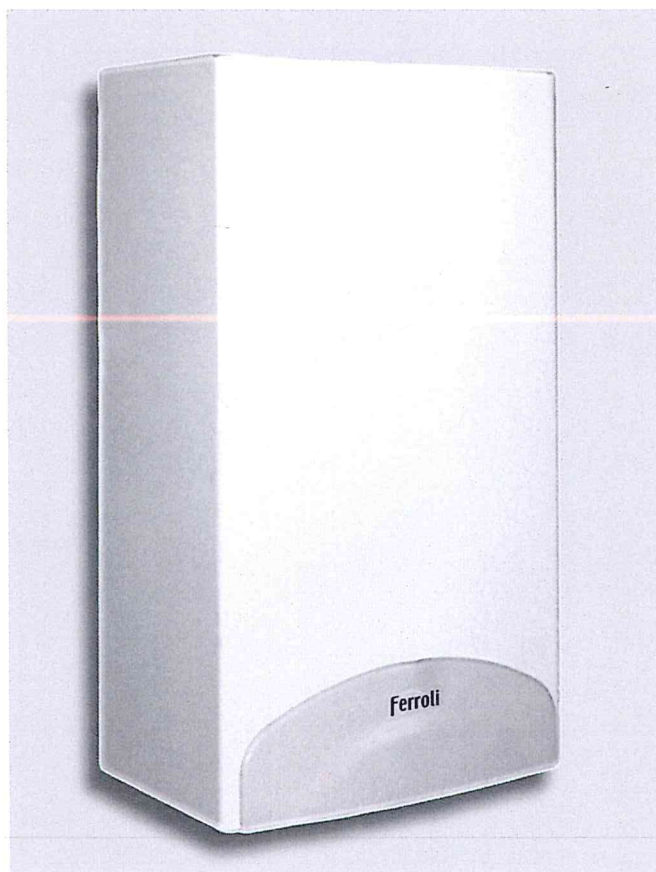


SYS 10 – 23

wall-hung, gas-fired,
system boiler,
for central heating



CE

INSTALLATION, MAINTENANCE AND USER INSTRUCTIONS

IMPORTANT

Your "benchmark" Installation, Commissioning and Service Record Log Book is enclosed in the last pages of this manual. This record must be completed and left with the end user.

"All CORGI Registered Installers carry a CORGI ID card and have a registration number. Both should be recorded in your central heating log book. You can check with the CORGI registered by calling CORGI on 01256 372300".



- Carefully read the warnings in this instruction booklet, as they provide important indications on the safety of installation, operation and maintenance.
- The instruction booklet is an integral and essential part of the product and must be kept safely by the user for future reference.
- If the appliance is sold or transferred to another owner, or if it is moved, always check that the booklet accompanies the boiler for reference by the new owner and/or installer.
- The installation and maintenance operations must be performed according to the standards in force, the instructions of the manufacturer and must be carried out by professionally qualified personnel.
- Incorrect installation or poor maintenance may cause a danger to persons or property. The manufacturer declines all liability for damage deriving from errors in the installation and maintenance of the appliance, and where there is a failure to observe the instructions provided by the manufacturer.
- Before performing any cleaning or maintenance operations, disconnect the appliance from the mains power supply using the main switched fused spur.
- In the event of faults and/or poor operation of the appliance, it should be isolated. Do not attempt to repair the appliance. Contact professionally qualified personnel only at ferroli caresafe.
- The products must only be repaired-replaced by professionally qualified personnel, using original spare parts only. Failure to heed this warning may affect the safety of the appliance.
- To ensure the correct operation of the appliance, annual maintenance must be performed by qualified personnel.
- This appliance must only be used for the purposes it has specifically been designed for. All other uses are considered improper and thus dangerous.
- After having removed the packaging, check that the contents are intact.
- The parts of the packaging must not be left within the reach of children, as they are potential sources of danger.
- In case of doubt do not use the appliance and contact your supplier.



This symbol indicates **"Warning"** and is placed near all warnings regarding safety. Such provisions must be strictly adhered to so as to avoid danger and damage to persons and property.



This symbol highlights a note or an important warning.

**Certification**

The CE Mark attests that Ferroli gas-fired appliances conform to the requirements specified in the corresponding European directives.

In particular, this appliance conforms to the following EEC directives:

- Directive 90/396, Gas Appliances,
- Directive 92/42, Efficiency,
- Directive 73/23, Low Voltage, (amended by no. 93/68)
- Directive 89/336, Electromagnetic Compatibility (amended by no. 93/68)



1. Operating/user instructions	4
1.1 Introduction	4
1.2 Control panel	4
1.3 Ignition and shut-down	5
1.4 Settings	5
1.5 Maintenance	5



2. INSTALLATION	6
2.1 General instructions	6
2.2 Siting of appliance.	6
2.3 Water connections	8
2.4 Gas connection	10
2.5 Electrical connections	10
2.6 Flues connections	14



3. SERVICE AND MAINTENANCE	20
3.1 Settings	20
3.2 Commissioning	21
3.3 Maintenance	22
3.4 Replacement of Parts	24



4. CHARACTERISTICS AND TECHNICAL SPECIFICATIONS	28
4.1 Dimensions and fittings	28
4.2 Overall view and main components	29
4.3 Hydraulic diagram	30
4.4 Technical data table	31
4.5 Diagrams	32
4.6 Internal electrical diagrams	33
4.7 Fault finding	35

BENCHMARK	36
------------------------	-----------

1. OPERATING/USER INSTRUCTIONS

1.1 Introduction

Dear Customer,

Thank you for having chosen the **SYS 10-23**, an advanced-concept FERROLI wall-hung boiler featuring cutting-edge technology, high reliability and constructional quality. Please carefully read this manual and leave it with the end user.

The **SYS 10-23** is a **high efficiency** heat generator for central heating systems, operating on natural gas or LPG.

The boiler can be connected to an external hot water cylinder for the production of domestic hot water, via a "Y" or "S" plan type system.

The boiler body is made up of a **copper heat exchanger**, the special design of which guarantees high heat exchange efficiency in all operating conditions, and an **atmospheric burner** featuring electronic ignition with ionisation flame control.

The boiler is completely **sealed** from the surrounding environment: the air required for combustion is taken in from the outside, and a fan is used to expel the flue gases. The accessories supplied with the boiler also include a variable-speed pump, expansion vessel, safety valve, air pressure switch, boiler thermostat, pump overrun and safety thermostat.

The user simply has to set the temperature required inside the home (using the optional, yet recommended room thermostat) or set the system temperature and the required domestic hot water outlet temperature at the cylinder stat. The regulation and control system will then ensure optimum operation all year round.

NOTE. External controls not supplied with the boiler.

1.2 Control panel

To access the control panel, open the drop down cover.

- A On /OFF switch
- B CH boiler thermostat
- C Reset knob with lamp
- D Central heating pressure gauge

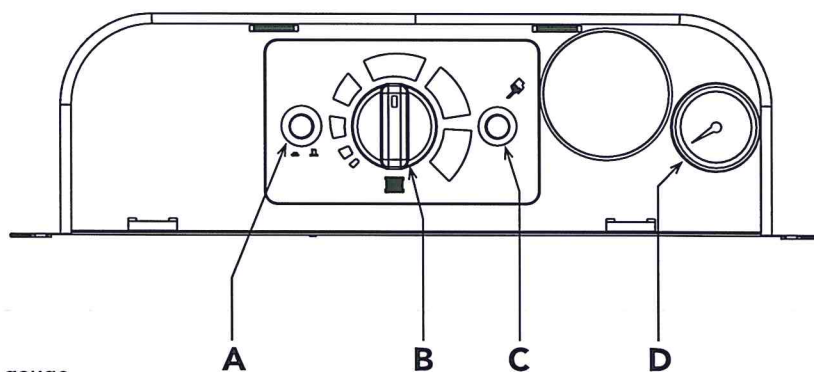




fig. 1

1.3 Ignition and shut-down

Ignition


- Open the gas cock of the boiler.
- Purge the gas supply of any air upstream of the gas valve.
- Turn on the main switched spur to the boiler.
- Press the boiler switch to on.
- Rotate the C.H. temperature adjustment knob above Min position.
- At this point, the burner ignites and the boiler starts to function automatically, operated by its control and safety devices.

 If after completing the start-up procedure correctly, the burner fails to ignite and the boiler shut down warning lights up, wait about 15 seconds then press the reset switch. The reset electronic control unit will repeat the start-up cycle. If after a second attempt the burners still fails to ignite, consult the paragraph "Troubleshooting".
If there is a power failure while the boiler is in operation, the burners automatically go out and re-ignite when the power returns.

 If the system is filled with very cold water, the boiler will automatically light due to the frost thermostat sensing the low temperature. The boiler will not shut down, until the water temperature reaches 10°C.

Shut-down

Close the gas isolation valve, push the button "A" to OFF and disconnect the appliance from the mains power supply.

 When the boiler power is off the boiler anti-freeze protection is not active.
For extended periods of inactivity during the winter months, and in order to avoid damage due to freezing, all the water should be drained from the boiler; alternatively, place approved antifreeze fluid in the central heating system.

1.4 Settings

Setting the ambient temperature (using the optional room thermostat)

Set, using the room thermostat, the temperature required inside the rooms. Based on the demand from the room thermostat, the boiler is ignited and heats the system water to the set central heating outlet temperature. When the required temperature inside the rooms is reached, the boiler switches off. A room thermostat must be used as per the building regulations 'Part L' this will maintain the system at the set central heating outlet temperature and ensure maximum efficiency.

System water pressure control

Using the filling loop and with the system cold top up the water pressure to approximately 1bar. Once the operation is completed, always close the filling loop. This device is fitted to the system by the installer on the central heating return pipework.

1.5 Maintenance

It is recommended to have annual service of the appliance performed by qualified personnel. Please refer to Chap. 3.3 in this manual for further information.

The casing, the control panel and the aesthetic parts of the boiler can be cleaned using a soft and damp cloth, dipped in soapy water if necessary. Do not use abrasive detergents or solvents.